



LEGACY
BUILDING SOLUTIONS



LEGACY BUILDING SOLUTIONS

BULK STORAGE SOLUTIONS



From the beginning, bulk storage has been a specialty for Legacy. That's because the needs of bulk storage companies and organizations compliment the benefits and features we have built into our tension fabric structures. For example, owners that store bulk commodities need a facility that is easy to load and unload, often with very large vehicles. Our use of solid steel tapered I-beams allows us to make very wide buildings, with wide openings, that do not need central column supports. That clearspan or freespan space means a lot to building owners in the bulk storage sector (and their drivers).

Here are some additional benefits with a Legacy structure that particularly address the needs of the bulk storage world.

- Virtually maintenance-free exteriors
- Durability
- Natural light
- Fully customizable (can fit in any footprint)
- No project too big (structures more than 300 feet wide and nearly limitless lengths)
- Liners
- Corrosion protection
- Solid steel frames provide engineering certainty and support cranes, conveyors, HVAC, fire suppression and more

This book is designed to show you the projects that indicate our commitment to the bulk storage industry.

TABLE OF CONTENTS

FEED

- [Bulk Feed Distribution](#)
- [Flat Feed Storage Building](#)

FERTILIZER

- [Fertilizer Storage Facility](#)
- [Bulk Fertilizer Storage](#)
- [Fertilizer Storage + Blending](#)
- [Fertilizer Storage, Mixing + Blending](#)

SALT

- [Agricultural Salt Bagging + Distribution](#)
- [Agricultural Salt Storage](#)
- [Salt Storage + Distribution at Railroad Transload Facility](#)



BULK FEED DISTRIBUTION

📍 Madison, Illinois

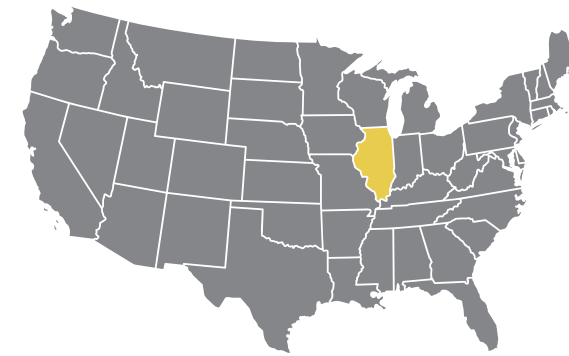
📏 62,800 total sq ft



“

The design process was really smooth, and the installation was very good. The crews arrived on time and did everything. They stayed with the job and did a thorough walk-through at the end.

OTIS ROBINSON | PLANT MANAGER



SIZE

- 120 ft x 460 ft with 40 ft x 190 ft lean-to

SITE PARAMETERS

- 90 mph wind, wind exposure C, 20# snow, enclosed, full exposure, low occupancy

FRAME + FABRIC

- Hot dip galvanized steel frame
- PVC fabric cladding, white with gray trim

VENTILATION + DOORS

- 18-in overhangs with mesh soffit for ventilation
- Two personnel doors and four overhead doors

ADDITIONAL FEATURES

- Conveyor load of 750 lbs. per running foot
- Precast concrete storage buns with sliding steel bin gates and panels
- 40,000-ton storage capacity

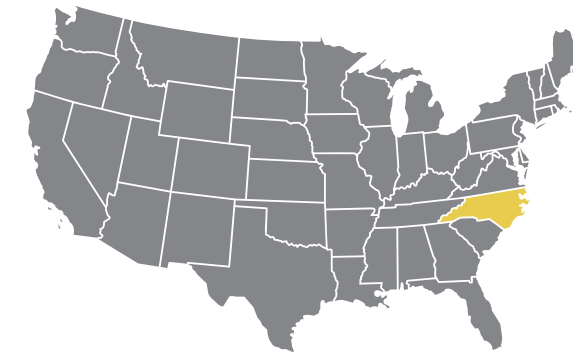
INSTALLATION SERVICES

- Installed by Legacy crews



FLAT FEED STORAGE

 Rose Hill, North Carolina |  60,000 total sq ft



SIZE

- 125 ft x 480 ft

SITE PARAMETERS

- 10# ground snow load, 109 mph wind, seismic C, wind exposure C, fully enclosed, fully exposed, low hazard

FRAME + FABRIC

- Primed rigid steel frames mounted on CIP foundation
- PE fabric cladding, including interior fabric liner

VENTILATION + DOORS

- Standard 18-in eave overhang with venting under eave
- 24 ARV-2000 vents are used to ventilate the cavity
- 12 tunneled ARV-2000 vents are used to ventilate the building's main air volume
- Six overhead doors and three personnel doors on sidewalls

ADDITIONAL FEATURES

- Exclusive 20 ft on center paneled roof system
- Point load for conveyor and catwalk
- Two full sets of egress stairs, platforms and hangars installed



“

We needed a building we could adapt. Having everything contained in one facility was easier than trying to add another part to an existing building. It was a great idea that allowed us to save space and not have wasted space.

KATIE ELMER | SMITHFIELD CORPORATE ENGINEER

FERTILIZER STORAGE

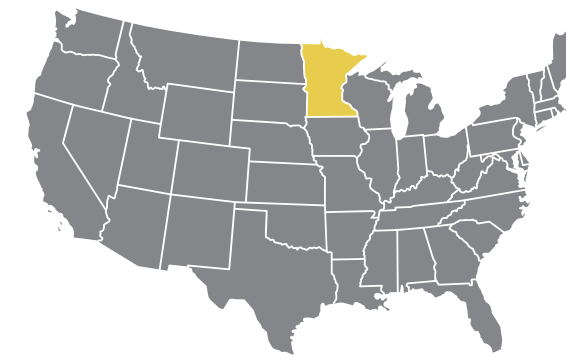
Williams, Minnesota | 14,616 total sq ft



“

We needed reasonably priced storage. We didn't feel like a traditional building was going to fit our budget.

BRENT BENIKE | GENERAL MANAGER



SIZE

- 84 ft x 174 ft

SITE PARAMETERS

- 60 psf ground snow load, 105 mph wind load, exposure C, seismic A

FRAME + FABRIC

- All steel components are hot dip galvanized
- ExxoTec™ Elite PVC fabric cladding, white with green trim
- Interior fabric liner

VENTILATION + DOORS

- Ventilated with 18-in overhang with mesh soffit
- ARV roof ventilators
- Two personnel doors and two overhead coiling doors

ADDITIONAL FEATURES

- Precast concrete panels along walls and storage bins
- Limited building footprint
- Three types of rigid steel frames support 4,600-lb, 8,400-lb and 9,600-lb conveyor loads along the structure

INSTALLATION SERVICES

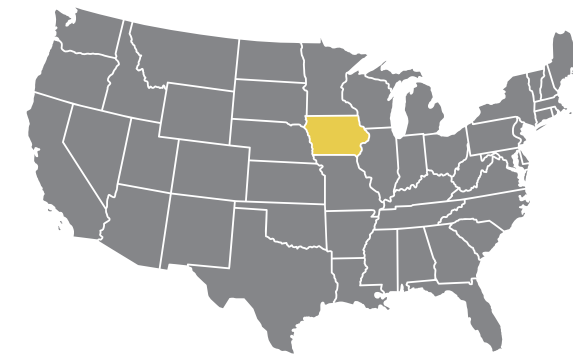
- Installed by Legacy crews



BULK FERTILIZER STORAGE

📍 Woodbine, Iowa

📏 19,404 total sq ft



SIZE

- Combined structure: 48 x 103 ft + 84 ft x 80 ft + 129 ft x 60 ft

SITE PARAMETERS

- 25 psf snow load, 105 mph wind load, wind exposure C, enclosed, full exposure

FRAME + FABRIC

- All steel components are hot dip galvanized
- ExxoTec™ Elite PVC white fabric cladding

VENTILATION + DOORS

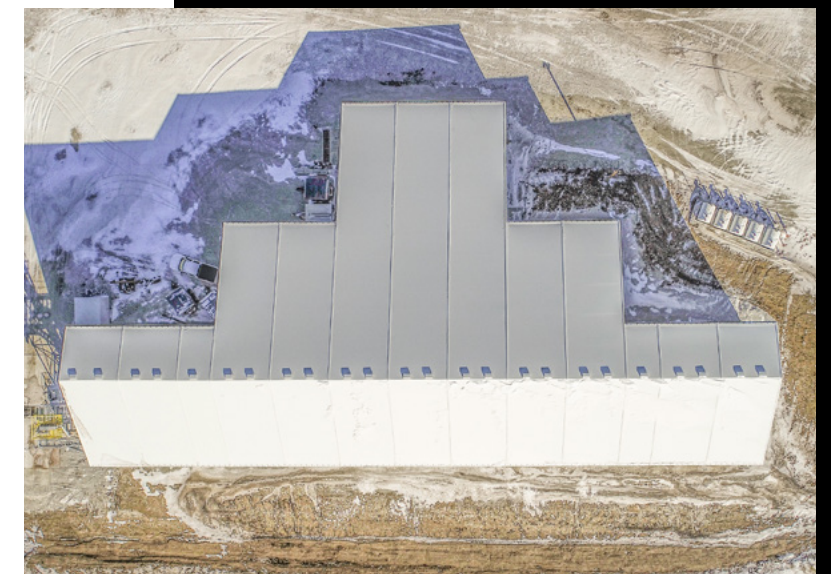
- Ventilated with 18-in overhang with mesh soffit and 24 ARV roof ventilators
- Two personnel doors and three overhead coiling doors

ADDITIONAL FEATURES

- Offset peak
- Each frame designed to support 350-lb conveyor and catwalk load
- Precast concrete panels along walls + storage bins

INSTALLATION SERVICES

- Installed by Legacy crews



“

We were working on a very aggressive timeline. We bought the land in February, and we needed to be operational early in the fall. Legacy is always on the ball and very transparent with prices and timelines.

CURTIS HOAKISON | WOODBINE PROCUREMENT MANAGER

FERTILIZER STORAGE + BLENDING

📍 East Dubuque, Illinois

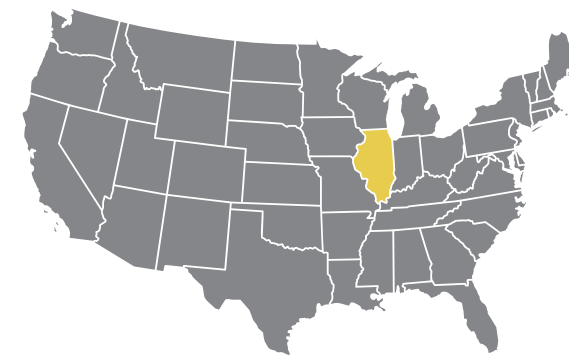
📏 63,010 total sq ft



“

Because of our soil issues, we simply couldn't afford to construct a more traditional building. The lightweight design of our Legacy building allowed us to reach a compromise between soil conditions and cost. Regarding the design and construction phases of the building, I can say that the process went exceptionally well. When I made eleventh-hour changes to the job, Legacy handled them with ease. The Legacy construction crew was very professional and courteous. They finished the job well ahead of schedule, worked safely, and followed our stringent safety requirements to the letter.

JOE BITTER | ALLIANT ENERGY / IEI BARGE SERVICES



SIZE

- 77 ft x 580 ft with three lean-tos

SITE PARAMETERS

- 30 psf snow load, 90 mph windspeed

FRAME & FABRIC

- HDG rigid steel frame
- FR PE fabric cladding, white with green trim

VENTILATION & DOORS

- Eight framed and wrapped doorways across three lean-tos
- 30 RV-3000 CFM roof vents
- 18-in overhangs with ITS tie down and mesh ventilation

ADDITIONAL FEATURES

- Six 14 ft x 11 ft bin lift gates
- Frames engineered to carry loads of 350 lbs per running foot
- Precast concrete panels utilized for storage bin walls

INSTALLATION SERVICES

- Installed by Legacy crews



FERTILIZER STORAGE, MIXING + BLENDING

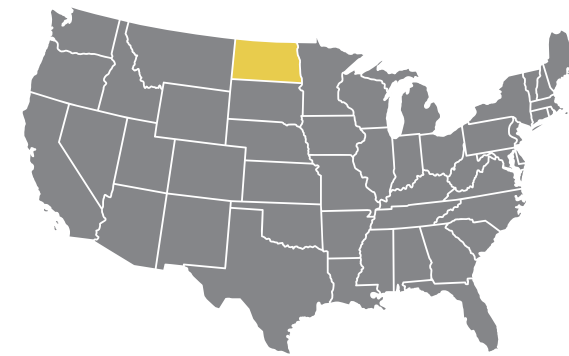
📍 Crary, North Dakota | 📏 37,200 total sq ft



“

Legacy delivered more bang for the buck.

PATRICK TRONSON | ASSISTANT MANAGER



SIZE

- 108 ft x 300 ft structure with a 40 ft x 120 ft lean-to

SITE PARAMETERS

- 26.1 psf ground snow load, 105 mph wind load, exposure C, seismic A

FRAME + FABRIC

- All steel components are hot dip galvanized
- ExxoTec™ Elite PVC fabric cladding, white and gray

VENTILATION + DOORS

- Passive ventilation through mesh soffit and roof vents
- Two personnel doors and two overhead doors

ADDITIONAL FEATURES

- Combination cast-in-place and pier foundation
- Conveyor system is supported by the roof beams and can load about 800 tons an hour
- 15,000-ton capacity

INSTALLATION SERVICES

- Installed by Legacy crews



AGRICULTURAL SALT BAGGING + DISTRIBUTION

📍 Naples, Illinois

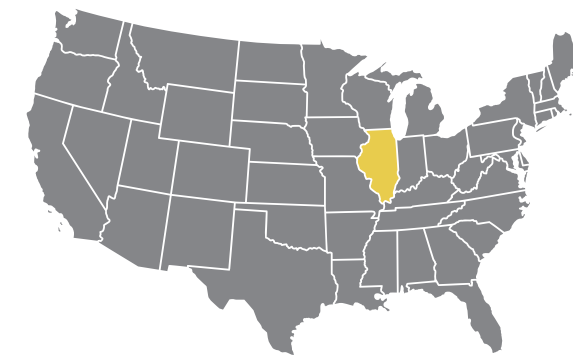
📏 15,000 total sq ft



“

One of the first considerations for storage is if the product is weather-sensitive. Anytime we're doing any type of fertilizer product we avoid steel. The building will have a lot of indirect contact with fertilizer and dust, and you want to use fabric because of the longer lifespan when dealing with corrosive materials.

DAVE WALKER | PROJECT MANAGER, CONSOLIDATED TERMINALS & LOGISTICS



SIZE

- 100 ft x 150 ft

SITE PARAMETERS

- 20 psf snow load, 90 mph windload, exposure C, full exposure

FRAME + FABRIC

- Hot dip galvanized rigid steel frame
- ExxoTec™ Elite PVC fabric, white with gray trim

VENTILATION + DOORS

- Overhead doors for heavy equipment access
- 18-in overhang with mesh soffits and roof ventilation

ADDITIONAL FEATURES

- Offset peak with fabric wall between two sections
- CIP concrete foundation with stem walls

INSTALLATION SERVICES

- Installed by Legacy crews



AGRICULTURAL SALT STORAGE

 St. Louis, Missouri

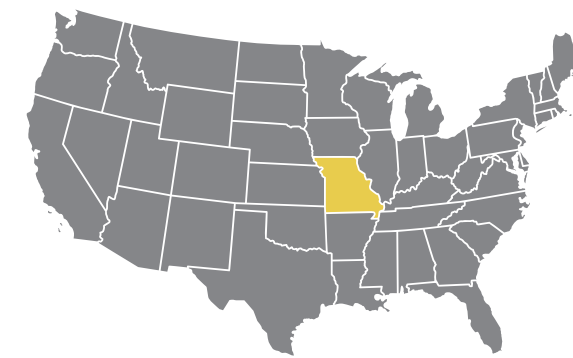
 28,080 total sq ft



“

Right away we noticed that the inside of the building was very clean, very bright. The white panels on top really let light come in. It's a nice building compared to the wooden domes.

DARRIN CHAPMAN | PLANT MANAGER



SIZE

- 108 ft x 260 ft

SITE PARAMETERS

- 20 psf snow load, 90 mph windspeed, wind exposure C, enclosed, full exposure

FRAME + FABRIC

- Rigid steel frames designed for 875 lb per linear foot conveyor + catwalk load
- ExxoTec™ Elite PVC fabric cladding, blue with white roof

VENTILATION + DOORS

- 18-in overhangs with mesh ventilation intake and icebreakers
- One personnel door and three overhead coiling doors

ADDITIONAL FEATURES

- Precast concrete panels create storage bins

INSTALLATION SERVICES

- Installed by Legacy crews



SALT STORAGE + DISTRIBUTION AT RAILROAD TRANSLOAD FACILITY

📍 Shelburne, Vermont

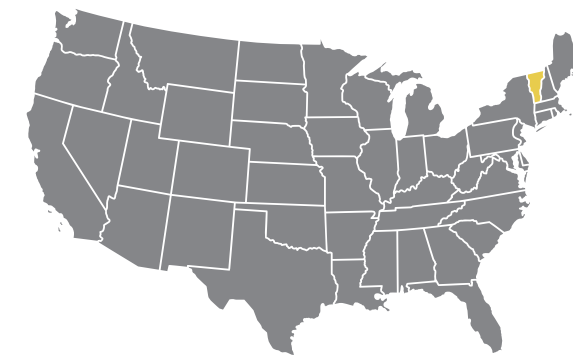
📏 101,520 total sq ft



“

Legacy's work ethic is incredible. Our company makes a point of being very neat, and the cleanliness of the railroad site throughout construction showed Legacy really respected that.

JOE BARRETT | PRESIDENT, BARRETT TRUCKING



SIZE

- Two 141 ft x 360 ft buildings

SITE PARAMETERS

- 40 psf ground snow load, 29 psf roof snow load, 105 mph wind load

FRAME + FABRIC

- Hot dip galvanized steel frames
- Non-FR PE fabric cladding, tan with white roof

VENTILATION + DOORS

- 18-in overhangs with ventilated mesh soffit on each side
- Two aluminum ARV-2000 roof vents framed and installed in each bay

ADDITIONAL FEATURES

- Pier with extended anchor foundation supplied by owner
- 12-ft Hanson precast concrete retaining walls
- Capped purlins to prevent dust entry





This book shows you just a fraction of the bulk storage projects Legacy has designed, fabricated and completed. We hope you liked these “greatest hits”. More importantly, we hope it showed you what we can accomplish. We bring a lot of experience to the table, but we also pride ourselves on being able to listen to your needs and the needs of building owners.

Finally, we love a challenge. Have a storage building that needs to fit between the railroad tracks and a local highway? We can design that. Need a frame that will support extra equipment such as a conveyor system? We do that all the time. Need a facility that can meet current and future requirements? Let us show you what we can do.





HEADQUARTERS

19500 County Road 142 | South Haven, MN 55382 | United States

TOLL-FREE 877.259.1528 | **FAX** 320.259.0087

EMAIL legacy@legacybuildingsolutions.com

UNITED STATES | CANADA | SOUTH AMERICA

LEGACYBUILDINGSOLUTIONS.COM | 320.258.0500

